

INDIANA CADRE OF TRANSITION LEADERS

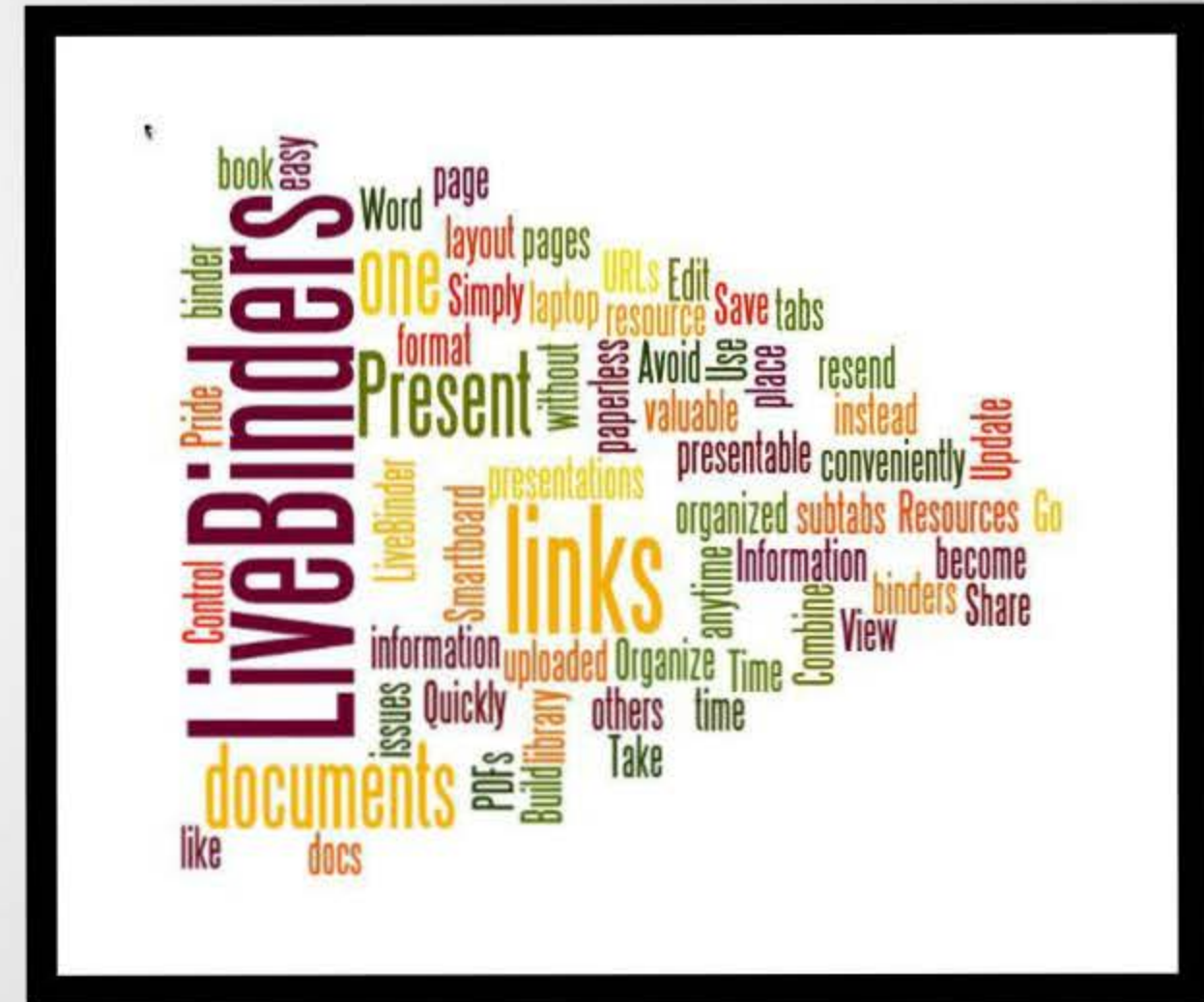


NORTHWEST CADRE



NORTHWEST CADRE

- ♦ Researched and agreed on new project
- ♦ Created a LiveBinder
- ♦ The binder was populated with information from INSTRC and DOE
- ♦ Each Cadre member began adding information to their district tab



WE'RE NOT LOOKING FOR CLAMS, WE'RE DIGGING UP LIVE BINDERS IN THE NORTHWEST CADRE



NORTHEAST CADRE



NORTHEAST CADRE

- Assembling resources for a job coach training module
- The AWS Foundation shared information about how grants can be accessed to fund programs
- Erskine Green presented information on training opportunities and shared updated outcome data
- Presentation from PATINS about web-based transition portfolio options



DIGGING IN OUR HEELS FOR JOB COACH TRAINING WITH THE NORTHEAST CADRE

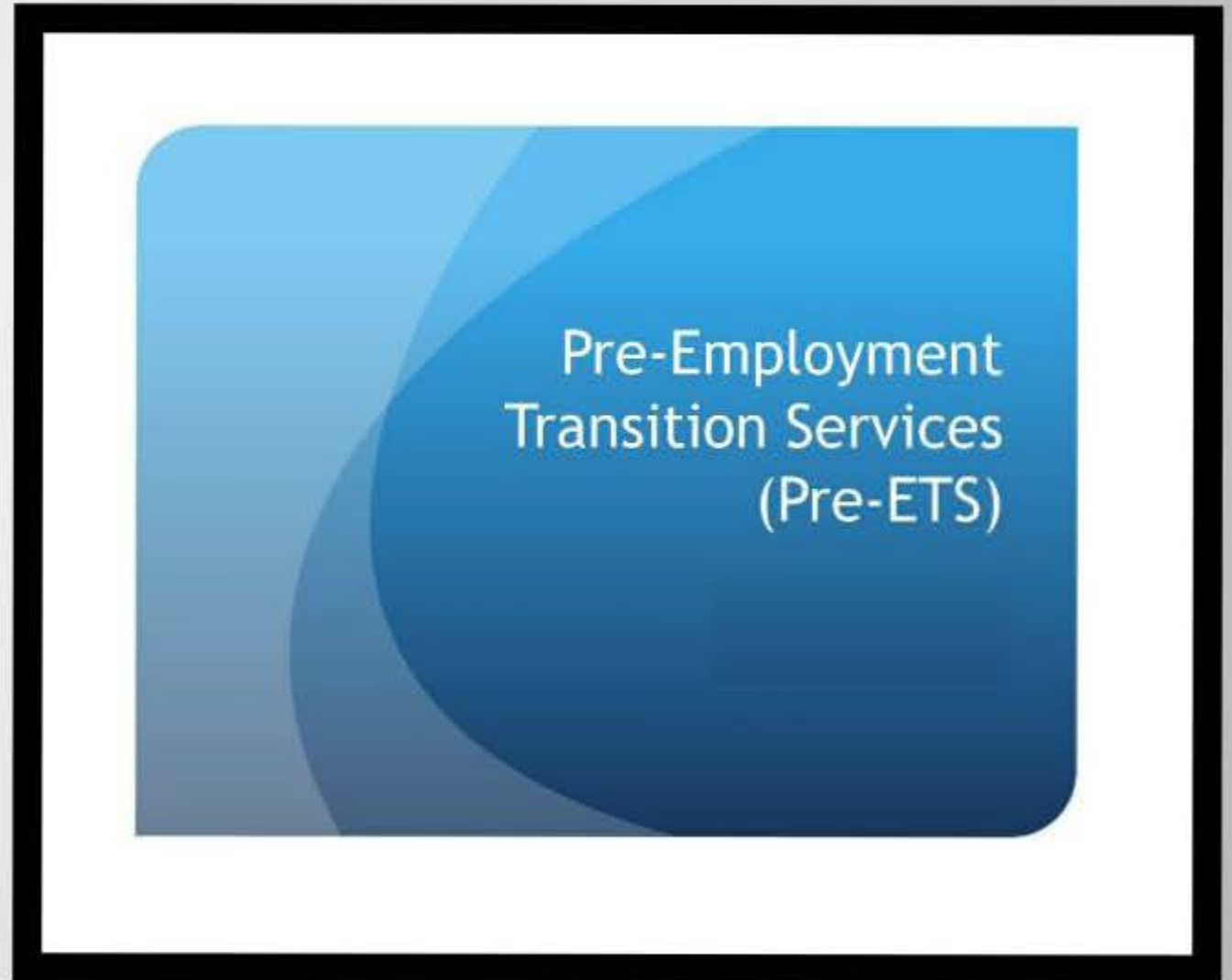


NORTH CENTRAL CADRE



NORTH CENTRAL CADRE

- ◆ Discussion on Pre-ETS from adult service providers
- ◆ Speakers from BDDS, DOE, VR, and Work-One
- ◆ Presentation from Erskine Green
- ◆ Discussed requirements of the Certificate of Completion



SHIFTING THROUGH TRANSITION INFORMATION WITH THE NORTH CENTRAL CADRE



EAST CADRE

- Jama
- Sara
- Amy
- Cassie
- Janet
- Melissa
- Amy
- Kelly
- Cynthia



- Deanna
- Elizabeth
- Brandi
- Lisa
- Mary Ann
- Erin
- Cindy
- Beth
- Olivia

We are Re-Building!

EAST CADRE

- ♦ The East Cadre has been in a re-building stage this school year
- ♦ Toured Future Choices in Muncie to learn about Independent Living Centers
- ♦ The Cadre is meeting in May to plan for the 2018-19 school year
- ♦ Everyone is excited about re-booting and re-focusing efforts to support the region!



BACK ON THE ROAD COLLABORATING WITH THE EAST CADRE



CENTRAL CADRE



CENTRAL CADRE

- ♦ Created Twitter and Instagram accounts to help disseminate information
- ♦ Visited Franklin College - A ThinkCollege Program
- ♦ Speakers from VR, accessABILITY Indiana, and Erskine Green
- ♦ Presentation from DOE and Project Success on the Certificate of Completion



WE'VE DUG PAST THE STONE AGE WITH SOCIAL MEDIA IN THE CENTRAL CADRE



SOUTHWEST CADRE



SOUTHWEST CADRE

- ♦ Presentations from Erskine Green, the Will Center, AND ATTIC, Inc.,
- ♦ Gained information over Diploma Options , Pre-ETS, and Indicator 13
- ♦ Discussions over services and activities used in the region
- ♦ Members created and shared authentic assessments



Authentic
Assessments

JUMPING IN FEET FIRST FOR AUTHENTIC ASSESSMENTS WITH THE SOUTHWEST CADRE



SOUTHEAST CADRE



SOUTHEAST CADRE

- ♦ Discussions about Vocational Rehabilitation referrals, the process, and Order of Selection
- ♦ Presentations from Erskine Greene and PATINS
- ♦ Survey for Pre-ETS: A year later - Success Stories and Challenges
- ♦ Leading the Transition Planning Handbook in the 2018-2019 School Year



RAPPELLING FOR Pre-ETS WITH THE SOUTHEAST CADRE



INTERAGENCY COLLABORATIONS





INDIANA INSTITUTE ON DISABILITY AND COMMUNITY
**CENTER ON COMMUNITY
LIVING AND CAREERS**
Indiana Secondary Transition Resource Center



Judith Gross
Center Director



Mary Held
Project Coordinator



Susan Henning-Harris
Community Outreach
Coordinator



Joni Schmalzried
Project Coordinator



Mike Nevins
Research Associate



Wendy Ritz
Research Associate



Hopefully today will inspire you to dig deeper!

CBI 2018!